

■ **Travertino**



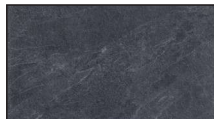
beige

Format	St./m <sup>2</sup>	kg/m <sup>2</sup>	m <sup>2</sup> /Pal.	Beschreibung	
60/90/2	~1.85	48	26.26		<b>105.-/m<sup>2</sup></b>

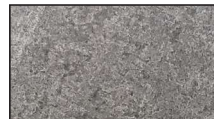
■ **Balegia**



gorge



groove



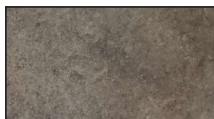
peak



greige



sand



charme



nuage

Format	St./m <sup>2</sup>	kg/m <sup>2</sup>	m <sup>2</sup> /Pal.	Beschreibung	
45/90/2	~2.47	48	19.44	gorge, groove, peak, greige + sand	<b>86.-/m<sup>2</sup></b>
60/120/2	~1.39	48	23.04	charme + nuage	<b>89.-/m<sup>2</sup></b>